



Past Issues No Longer Available From Factory



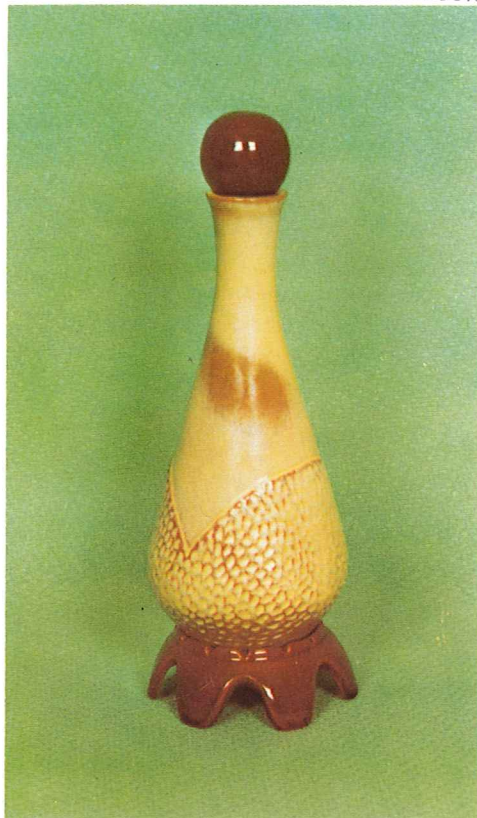
Available in 1975
Color: Autumn Yellow

The original "Elephant Mug" was created for the National Republican Womens Clubs and copyrighted by Frankoma in 1969 and patented in 1970. Now each year this mug is produced by Frankoma as a stock item. The current mug is only available during that year — no back numbers are available at the plant. Each year the color is different. © F.P. 1969, U.S. Pat. No. D214,868

5 oz. coffee mug \$3.00 each

Available only through Frankoma Accounts, Retail Shop at Plant and Republican Womens Clubs.

TERMS OF SALES: PRICES ARE NET
PLEASE ADD 2% FOR STATE SALES
TAX AND INCLUDE CHECK WITH
ORDER. WE WILL BILL YOU FOR
POSTAGE AND INSURANCE.



Pictured is a 13" Bottle Vase, the seventh in a series of "Limited Edition Pieces." The mold is signed by the artist — Joniece Frank. Each piece is numbered and the master mold will be destroyed after 3,500 impressions. No seconds are sold. The color is Desert Gold and Coffee.

No. V-7 \$10.00 Each

Available through Frankoma Accounts
and Retail Shop at Plant

"DONKEY MUG"

Will Be Available

June 1, 1975

Color: Autumn Yellow

\$3.00 Each



There has been much said during the last few years about "lead poisoning" from using pottery dishes and containers. Shown here is the Official Seal of Certification, that this ware is ALL safe from lead poisoning. • Practically all pottery wares made in the U.S. are so certified, so . . .

Buy Frankoma!

Be Safe • Buy American

You can dress FRANKOMA "up or down," for it is both useful and beautiful, whatever the occasion. All the extra serving pieces, as well as the centerpiece and accessories, are made to match in color and texture, and they are ovenproof and dish-washer proof.

Frankoma is ovenproof but does not claim to be flameproof. You will find it very durable and serviceable wherever china or pottery can be used. It is designed to be entirely satisfactory and we would appreciate letting the factory know of any deviation from this standard.

You are a welcomed guest at the factory any time. Should you come during working hours, we will be glad to conduct you through the plant to see Frankoma made.

• Prices subject to change without notice.

Prices shown are suggested retail.

Prices may vary due to shipping costs.

FRANKOMA POTTERY, INC.

— On Frankoma Road —

P. O. Box 789 • 918-224-5511

Sapulpa, Oklahoma 74066